

## Causeway Bay Plaza 2

Shopping • Dining • Leisure



# Causeway Bay Plaza 2



# Causeway Bay Plaza 2



# Our Key Tenants



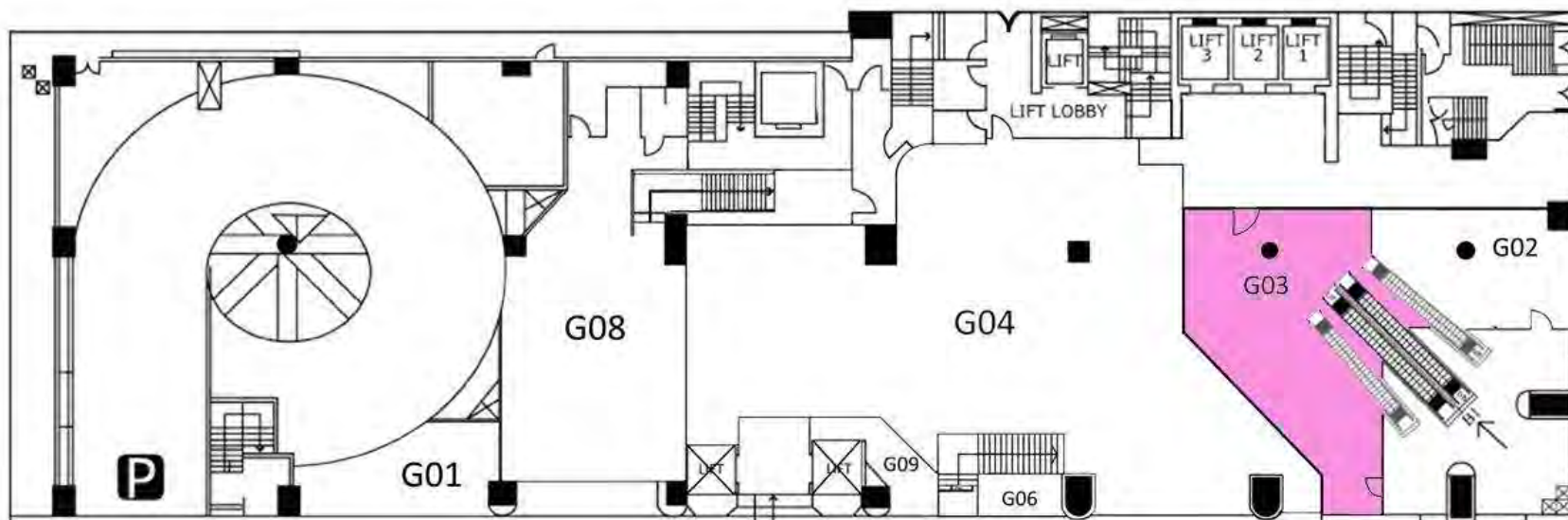
# Beauty and Lifestyle



# CAUSEWAY BAY PLAZA 2

## 銅鑼灣廣場二期

面向維港海景  
Facing Harbour



Facing Percival street 面向波斯富街

Facing Lockhart Road 面向駱克道

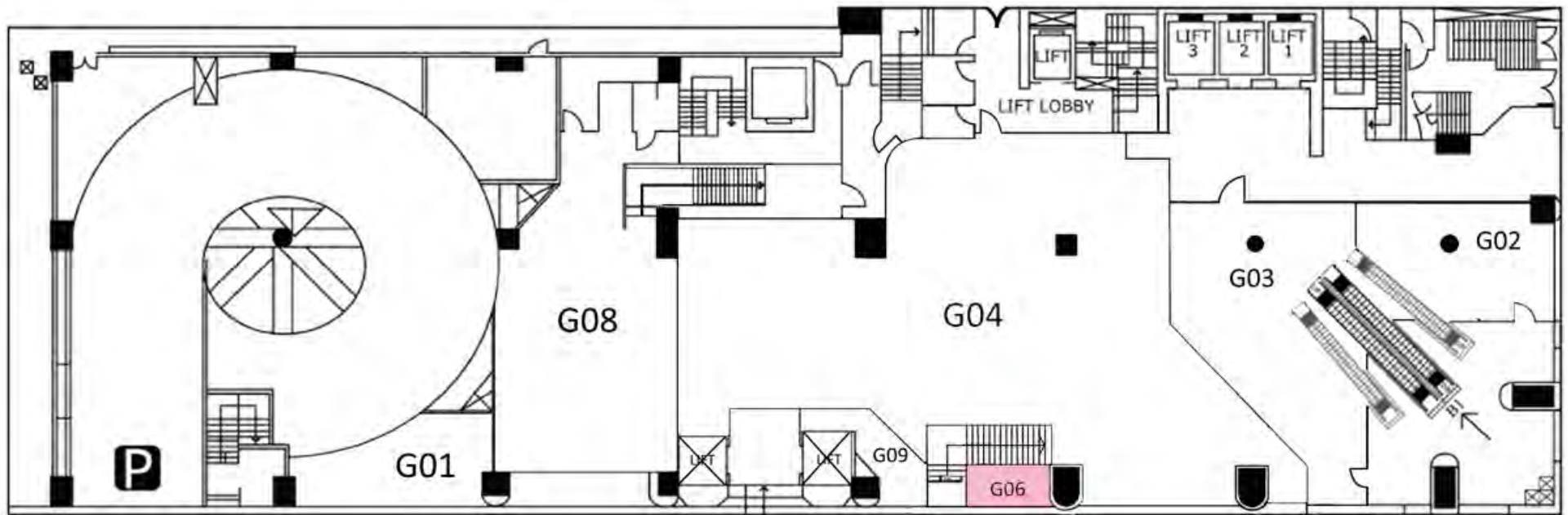
### GROUND FLOOR PLAN

Not to scale, for identification purpose only

# CAUSEWAY BAY PLAZA 2

## 銅鑼灣廣場二期

面向維港海景  
Facing Harbour



面向波斯富街  
Facing Percival street

面向駱克道  
Facing Lockhart Road

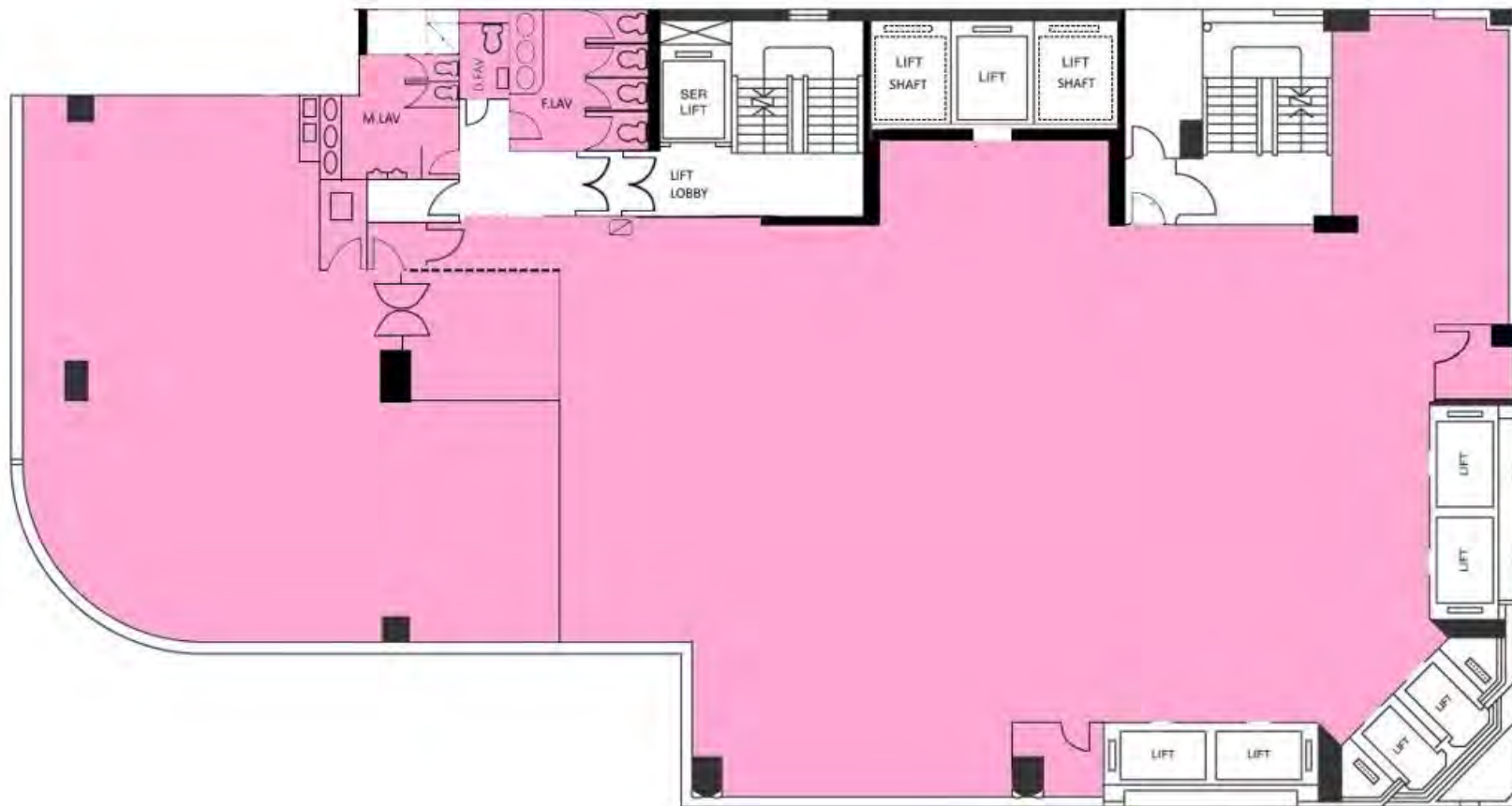
## GROUND FLOOR PLAN

Not to scale, for identification purpose only

# Floor Plan

## CAUSEWAY BAY PLAZA 2 銅鑼灣廣場二期

面向維港海景  
Facing Harbour



Facing Percival Street

**7<sup>th</sup> FLOOR PLAN**



# 7/F Interior Photo for Reference



# Advertising Spaces



facing Lockhart Road

# Advertising Spaces

Advertising Light Box



G/F facing Percival Street

Advertising Light Box



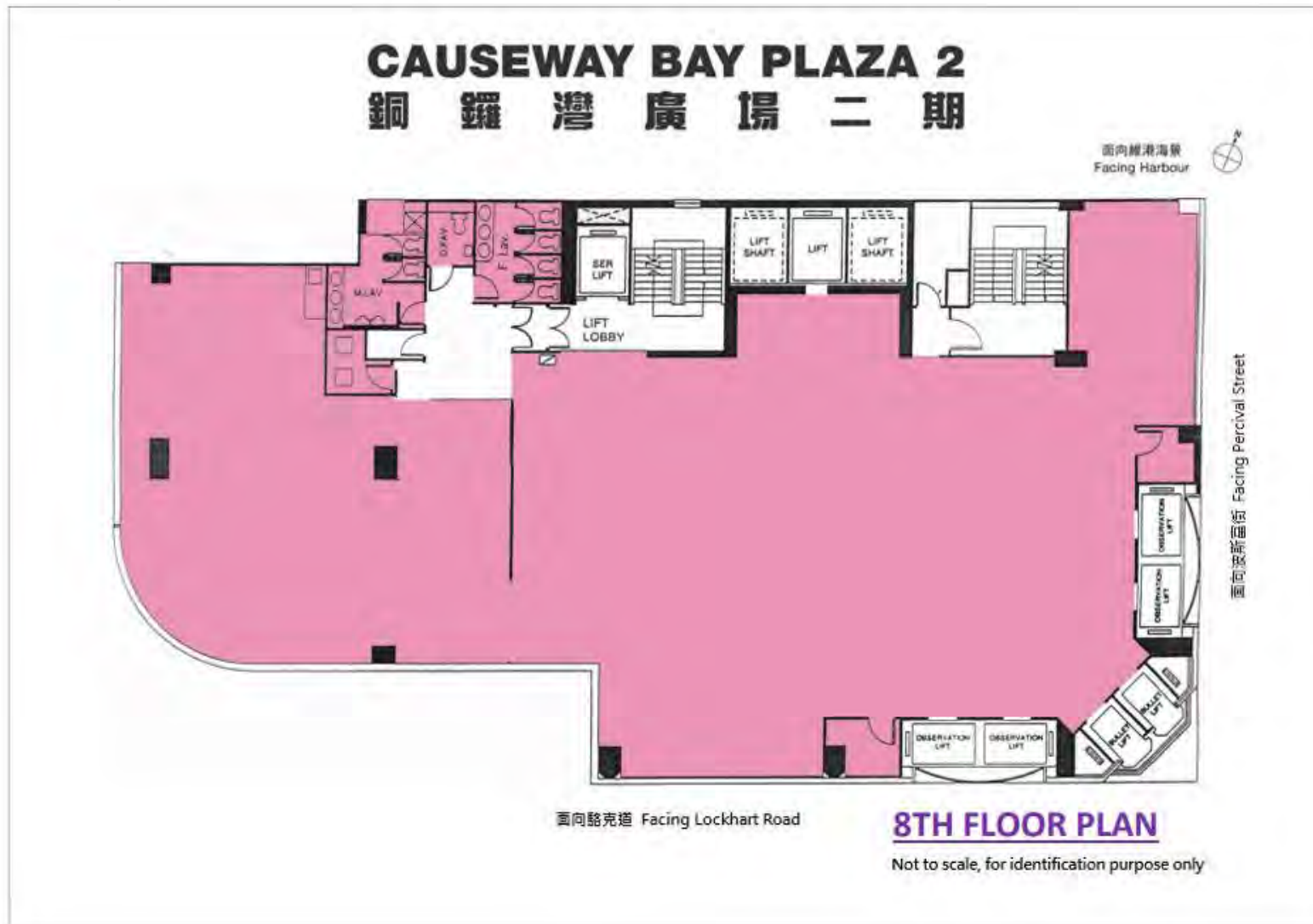
2/F Causeway Bay Plaza 2

# Potential Space

Strictly Private & Confidential  
Subject to Offer & Without Prejudice

Premises	7/F of Causeway Bay Plaza 2, 463-483 Lockhart Road, Hong Kong
Area	7,430 s.f. (Gross)
Asking Rent	Subject to negotiation
Term	3 years Fixed
Management Fee & A/C Charge (subject to revision)	@\$10.90/s.f.g. (\$77,272.00/month) (A/C supply hours: 10:00hrs - 24:00 daily)
Additional A/C Charge (beyond normal business hours)	\$440.00/hour (subject to revision)
Signage Fee	\$8,000.00/month (all exclusive)
Promotion Levy	\$7,430.00/month (\$1.0/month)
Rates (subject to revision)	\$38,850.00/quarter (Included signages)
E&M Provisions	Chiller pipe: 80mm Fresh water pipe: 40mm & 50mm Electricity provision: 200AMP TPN (Sitting Area) & 300AMP TPN (Kitchen Area) Gas pipe: Yes Grease Trap: 3,000L
Handover condition	In "Bare-shell" condition
Availability	To be confirmed
Remarks	<ul style="list-style-type: none"><li>• The above information is subject to change by landlord without prior notice</li><li>• Other terms and conditions are subject to landlord's sole discretion</li></ul>

# Floor Plan



Facing Lockhart Road

## 8<sup>th</sup> FLOOR PLAN

Not to scale, for identification purpose only

# 8/F Interior conditions



# 8/F Interior conditions



# Advertising Spaces

Advertising Space



facing Lockhart Road

Advertising Space



facing Percival Street



# Advertising Spaces

Advertising Light Box



G/F facing Lockhart Road

Advertising Light Box



2/F Causeway Bay Plaza 2

# Potential Space

Strictly Private & Confidential

Subject to Offer & Without Prejudice

<b>Premises</b>	<b>8/F of Causeway Bay Plaza 2, 463-483 Lockhart Road, Hong Kong</b>
Area	7,500 s.f. (Gross)
Asking Rent	Subject to negotiation
Term	3 years Fixed
Management Fee & A/C Charge	@\$10.90/s.f.g. (\$81,750.00/month) (A/C supply hours: 10:00hrs - 24:00 daily) (subject to revision)
Additional A/C Charge	\$440.00/hour (subject to revision) (beyond normal business hours)
Signage Fee	\$6,000.00/month (all exclusive)
Promotion Levy	\$7,500/month (\$1.0/ s.f.g./month)
Turnover Rent	10% of the monthly Gross Sales Turnover
Rates (subject to revision)	\$37,290.00/quarter (Included signages)
E&M Provisions	Chiller pipe: 80mm Fresh water pipe: 40mm & 50mm Electricity provision: 400AMP TPN Gas pipe: Yes Grease Trap: 3,000L
Handover condition	In "Bare-shell" condition
Availability	Immediate
Remarks	<ul style="list-style-type: none"><li>The above information is subject to change by landlord without prior notice</li><li>Other terms and conditions are subject to landlord's sole discretion</li></ul>

# Causeway Bay Plaza 2



- Easily accessible by different means of transport
- High pedestrian flow of Percival Street and Lockhart Road
- Within 2 minutes walking distance from MTR
- Cluster of Retail and Entertainment Hub

[www.laisun.com](http://www.laisun.com)

[www.laisunclub.com](http://www.laisunclub.com)

香港銅鑼灣駱克道463-483號  
463-483 Lockhart Road, Causeway Bay  
Hong Kong  
2893 4483 (24 Hours)



Lai Sun Real Estate Agency Limited  
麗新地產代理有限公司  
地產代理牌照號碼: C-004379

LEASING HOTLINE 租務熱線  
(852) 2838 9163